

# RAC Member Priorities Tracker

## Commuting and congestion

In November 2021, 264 of our members<sup>1</sup> took part in a survey telling us about their daily commute, what activities they would do if their commute was shorter and their views on traffic congestion and how it could be managed more effectively.

### Our commute

#### Satisfaction

Members show lower levels of satisfaction with their daily commute compared to 2020, with many looking for ways to improve it.

**59%** are satisfied<sup>2</sup> with their daily commute in 2021. This has decreased from 73% in 2020.

- » **48%** of peak hour drivers<sup>3</sup> are satisfied with their commute
- » **83%** of regional members are satisfied with their commute

**45%** took action in the last year<sup>4</sup> to improve their daily commute.

The most common actions were:

- » **15%** Work from home
- » **8%** Change commute time
- » **7%** Catch public transport more

#### Commuting time

**92%** estimated the duration of their daily commute<sup>5</sup> to be under one hour.

**26mins** was the average estimated commuting time. This is 4 minutes less than 2020.

- » **15 minutes** for regional members
- » **30 minutes** for peak hour drivers in Perth

**13mins** was the average acceptable<sup>6</sup> increase in commuting time.

- » **12 minutes** for regional members
- » **19 minutes** for regular peak hour drivers in Perth

**27mins** is the average maximum commute time regional members would be willing to travel.

**49mins** is the average maximum commute time regular peak hour drivers in Perth<sup>7</sup> would be willing to travel.

Top three responses<sup>9</sup> for how members would use additional time gained from a shorter commute were:

**59%** Exercise (individual)



**57%** Jobs around the home



**53%** Spend time with family and friends



### What we think about congestion

With the rise in working from home and flexible work arrangements<sup>8</sup>, we asked members which day of the week they experienced the highest level of congestion.

**Monday** was the top response (26%), however, 49% believe congestion is **the same** for all days they commute.

Congestion is an issue for our Perth and regional members.

#### Regional members

At least once a week:

**37%** experience congestion on regional roads/highways in their local area/town centre.

- » 5 or more days a week **10%**
- » A few days a week **10%**

<sup>1</sup> 222 from the Perth and Peel region, 42 from regional WA. Age, gender and location sampling quotas were applied, and data has been post-weighted to be representative of RAC's membership (which is broadly consistent with the WA population profile) - the margin of error at total sample level is +/- 6.03% at the 95% confidence level.

<sup>2</sup> Results are based on respondents who said they were 'satisfied' or 'very satisfied'.

<sup>3</sup> Drive in peak hour five or more days a week.

<sup>4</sup> In 2020, the top two responses were: work from home (10%), and drive more (10%).

<sup>5</sup> Daily commute time is based on a one way trip.

<sup>6</sup> Members were asked 'what would be the maximum time (mins) you would be willing to travel to your destination (thinking about a one-way trip)?'

<sup>7</sup> In 2020 - both regional members and Perth peak hour drivers reported a maximum commute time of 44 minutes.

<sup>8</sup> For the 26 members that work from home, 42% said their typical days from home vary and Monday was the most common weekday (27%), closely followed by Wednesday (23%).

<sup>9</sup> Prompted responses were offered and members could select their top response.



For the better

## Perth members

In the past 12 months, members think congestion on Perth roads has<sup>10</sup>:

**↑ Increased**  
**75%**  
vs 48% in 2020

**Stayed the same**  
**13%**  
vs 28% in 2020

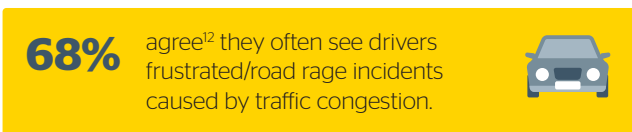
**↓ Decreased**  
**1%**  
vs 11% in 2020

However compared with 2020, members reported their daily commute for work or study being 5 minutes faster on average in 2021.

Members think the main causes<sup>11</sup> of traffic congestion on Perth roads relate to:



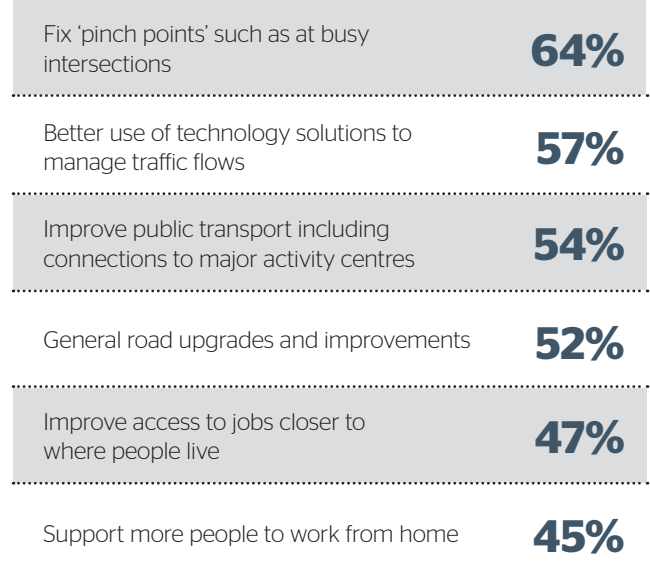
## Congestion impacts



## Government action on Perth roads<sup>14</sup>

**70%** agree<sup>13</sup> that traffic congestion requires immediate attention by government. 

Perth members believe the following initiatives would be most effective in easing traffic congestion on Perth roads<sup>15</sup>.



<sup>10</sup> A further 10% said they don't know/can't say.

<sup>11</sup> Prompted responses were offered and members could select multiple responses.

<sup>12</sup> Metropolitan members only.

<sup>13</sup> Results are based on respondents who said they 'agree' or 'strongly agree'.

<sup>14</sup> The questions in this section were asked of Perth members only.

<sup>15</sup> Members who answered 'a lot' or 'a great deal'.



[rac.com.au/advocacy](https://rac.com.au/advocacy)