

# RAC Member Priorities Tracker

## Transport choices and priorities

In February 2023, 532 of our members<sup>1</sup> took part in a survey telling us how they move around and their priorities for government action to deliver transport options that are safer, more sustainable, and better connected for Western Australians and their communities now and in the future.

### Getting to work/study

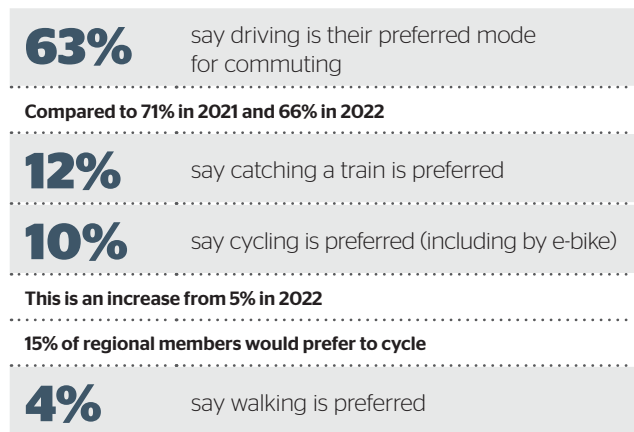
Modes of travel members currently use<sup>2</sup>:



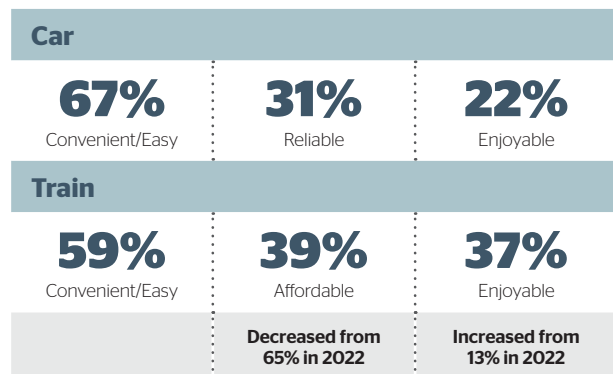
Modes of travel used by regional members:



### How we prefer to travel to work/study is changing:

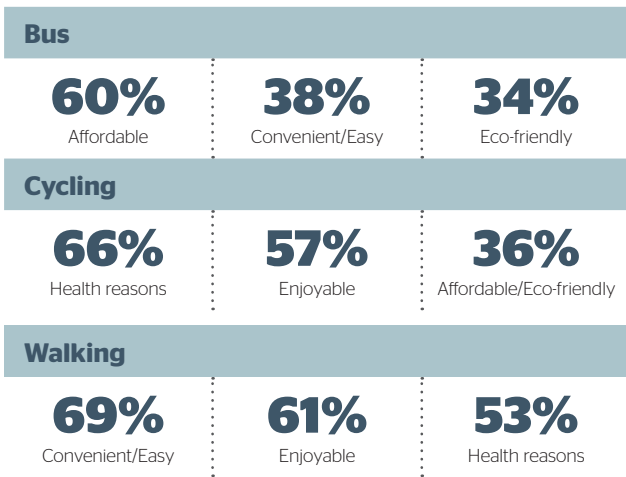


The top three reasons why people prefer the following modes of travel are:



<sup>1</sup> 444 from the Perth and Peel region, 88 from regional WA. Age, gender and location sampling quotas were applied, and data has been post-weighted to be representative of RAC's membership (which is broadly consistent with the WA population profile) - the margin of error at total sample level is +/-4.23% at the 95% confidence level.

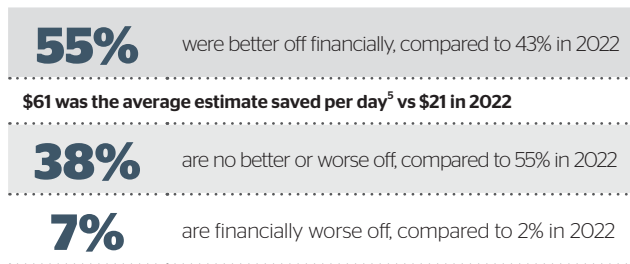
<sup>2</sup> Responses sum to more than 100% as respondents may nominate more than one mode of travel. For instance, some members park and ride at train stations to get to work/study. Other travel modes typically used by less than 4% of members have not been included here.



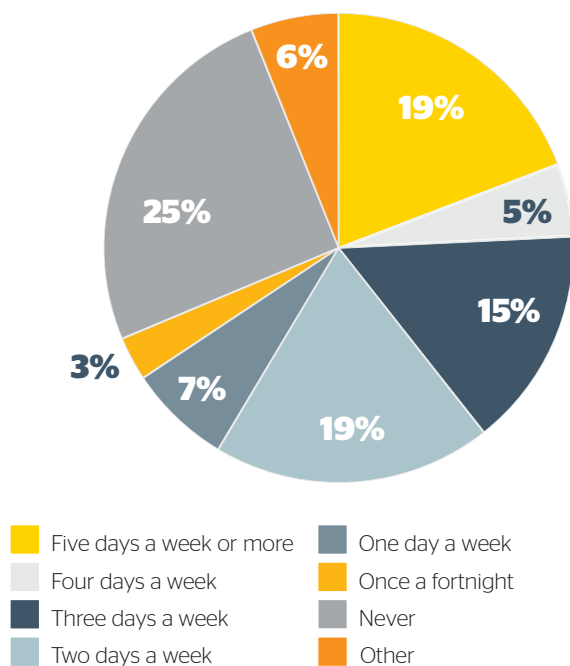
### Working from home


In 2023, members say they work from home<sup>3</sup> an average of 1.6 days per fortnight. Those that work from home estimate that it saves them an average of 79 minutes per day (down from 88 minutes per day in 2022).

#### Members<sup>4</sup> estimate that when working from home:



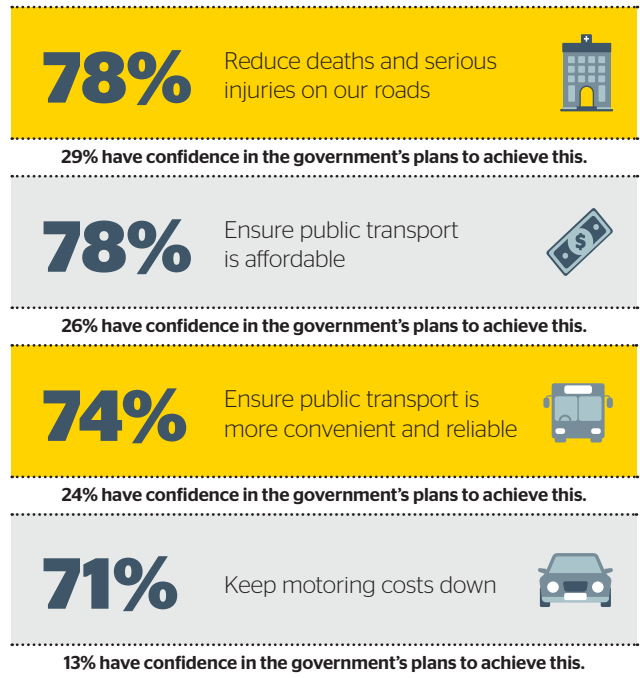
Members were asked how often they would ideally like to work from home. The responses were as follows:



 For further information please contact [advocacy@rac.com.au](mailto:advocacy@rac.com.au)

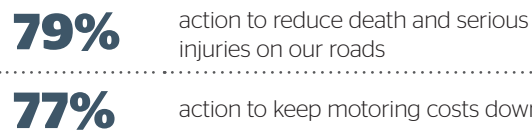
### Top Priorities for Government

Members feel it's most important<sup>6</sup> for government to act to:

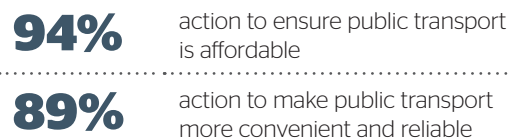


#### Different members have different priorities:

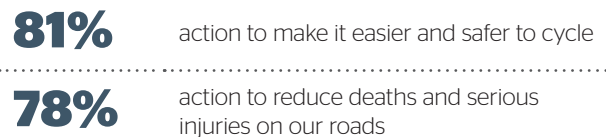
##### Regional members want:



##### Regular public transport users<sup>7</sup> want:



##### Regular bike riders<sup>8</sup> want:



<sup>3</sup> Based on 361 responses to this question and the average figures include those that never work from home.  
<sup>4</sup> Based on 130 responses to this question.  
<sup>5</sup> Based on 108 responses to this question.  
<sup>6</sup> Includes responses of 'very important' and 'extremely important'.  
<sup>7</sup> Those who use public transport at least once a week.  
<sup>8</sup> Those who ride bikes at least once a week.